

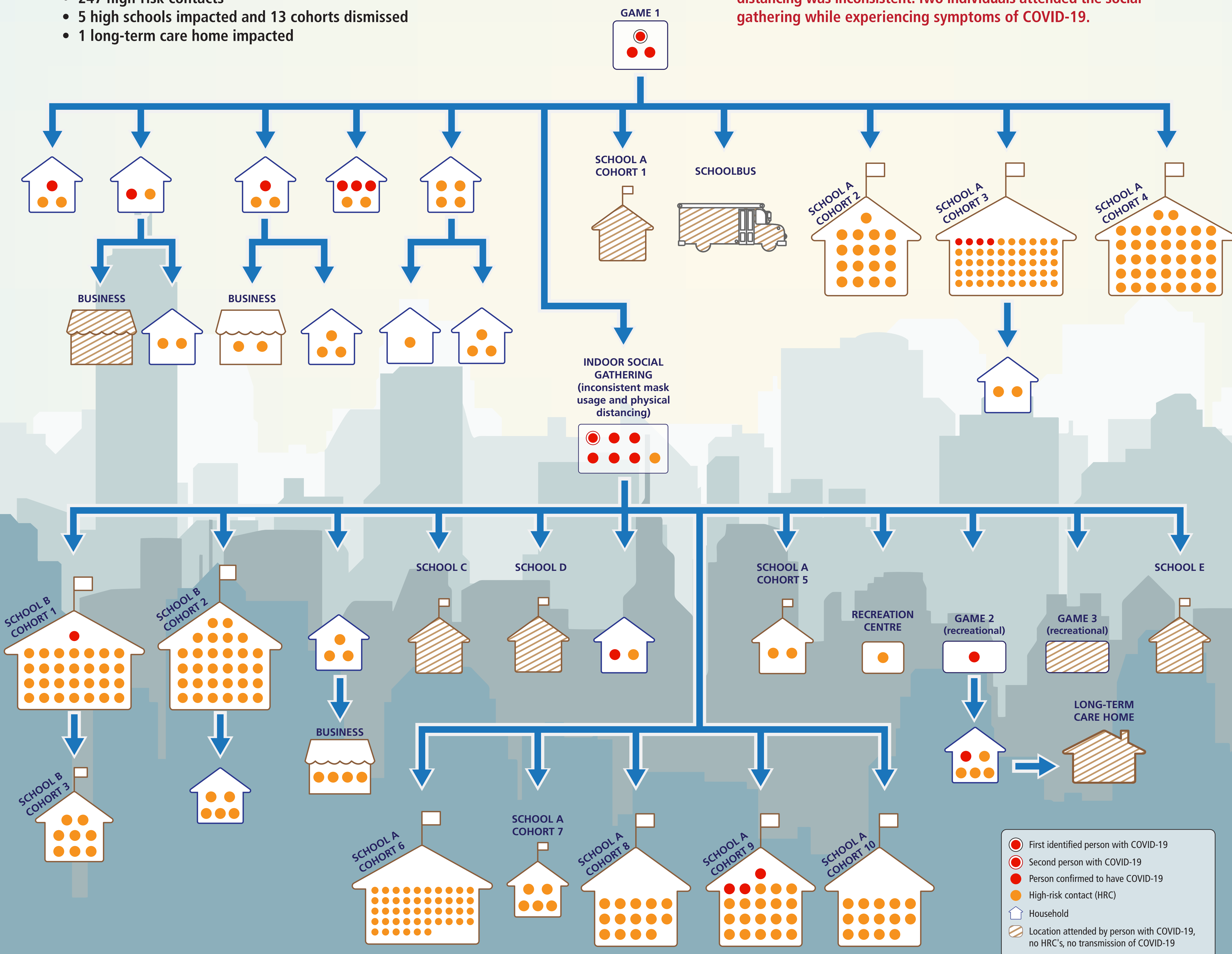
A Real-world Contact Tracing

Example – Sport and Social Cluster, September 2021

One person with COVID-19 played an **organized sport** game (GAME 1) outdoors. The next day they developed symptoms of COVID-19. This person delayed testing and attended a social gathering and school while experiencing symptoms of COVID-19. An additional person with COVID-19 symptoms, who **did not** attend GAME 1, attended a social event with players from GAME 1. Both individuals delayed COVID-19 testing after developing symptoms and had not received a COVID-19 vaccine. **This led to 26 people testing positive for COVID-19 (and that number is continuing to rise) over a 23-day period:**

- All individuals confirmed to have COVID-19 had not been fully vaccinated against COVID-19, though all met age-based eligibility criteria for vaccination.
- Five individuals attended school and other community settings while symptomatic and delayed testing for more than five days after having symptoms of COVID-19.
- Players in GAME 1 did not wear masks or maintain physical distance.
- The social gathering was held indoors, mask usage and physical distancing was inconsistent. Two individuals attended the social gathering while experiencing symptoms of COVID-19.

- 247 high-risk contacts
- 5 high schools impacted and 13 cohorts dismissed
- 1 long-term care home impacted



- **This graphic shows transmission up to September 23. Transmission continues in the community. By September 30, transmission spread to include an additional 11 people testing positive for COVID-19, 217 more high-risk contacts and led to the closure of an elementary school.**
- **All transmission shown in schools and sports games involves youth over the age of 12.**
- **To avoid double counting the number of people with COVID-19, individuals are only shown in the setting they were initially exposed to the virus and not counted again in locations they attended following transmission.**
- **The number of contacts at each setting reflects the total number of people present. Some individuals were present at more than one location and have been included in each setting in this graphic.**
- **The shaded locations are areas where the individual(s) with COVID-19 attended but transmission did not occur / does not appear to have occurred and there were no high-risk contacts identified by September 23. They are included in the graphic to highlight the impact of preventative measures taken in schools, business, and long-term care homes.**