







## Ottawa Public Health Respiratory and Enteric Surveillance Report April 5-11, 2020 (Week 15)

This report provides a overview of the current Influenza season in the City of Ottawa, Ontario. For information on the current influenza season across Ontario see the [Ontario Respiratory Pathogen Bulletin](#), and for Canada see the [FluWatch report](#). Information on past Influenza seasons in the City of Ottawa is available at [www.OttawaPublicHealth.ca/FluReport](http://www.OttawaPublicHealth.ca/FluReport).


**Table 1a: Ottawa Respiratory Activity Highlights**

Data Source	Activity Level Compared To Previous Week	Details
<b>Overall Assessment (Week 15)</b>	Similar to last week. 	Influenza activity in Week 15 was similar to Week 14.
<b>Lab-confirmed cases of influenza<sup>1</sup> (2019-2020 season to date)</b>	Similar to last week. 	852 cases have been reported since Sept 1; 545 (64.5%) were influenza A, 300 (35.5%) were influenza B, and 7 (0.8%) were influenza A & B. 34 of the influenza A cases were subtyped as H3, 6 as H3N2, and 48 as H1N1.  Median age (overall): 54 years Median age (influenza A): 62 years Median age (influenza B): 31 years
<b>Influenza percent positivity<sup>2</sup> (Week 15)</b>	Lower than last week. 	The percent positivity of all respiratory samples tested for influenza is 4.3%.
<b>Influenza related mortality<sup>1</sup> (2019-2020 season to date)</b>	Similar to last week. 	OPH is aware of 3 influenza-related deaths this season.
<b>Respiratory outbreaks in institutions and public hospitals<sup>1</sup> (2019-2020 season to date)</b>	Similar to last week. 	0 new influenza outbreaks and 8 new non-influenza respiratory outbreaks reported this week, for a total of 0 ongoing influenza outbreaks and 21 ongoing non-influenza respiratory outbreaks.  Since September 1, 2019, 40 influenza A outbreaks, 7 influenza B outbreaks, and 90 non-influenza respiratory outbreaks have been reported in Ottawa.

**Table 1b: Ottawa Gastroenteritis Activity Highlights<sup>1</sup>**

Data Source	Activity Level Compared To Previous Week	Details
<b>Gastroenteritis outbreaks in institutions and public hospitals<sup>1</sup></b> <b>(2019-2020 season to date)</b>	Lower than last week. 	0 new enteric outbreak reported this week, for a total of 1 ongoing enteric outbreak. 59 enteric outbreaks reported in Ottawa since September 1, 2019.

**Table 1c: Ottawa Clostridium Difficile Infection (CDI) Outbreaks in Public Hospital Highlights<sup>1</sup>**

Data Source	Activity Level Compared To Previous Week	Details
<b>Clostridium difficile infection (CDI) outbreaks in public hospitals<sup>1</sup></b> <b>(2019-2020 season to date)</b>	Similar to last week. 	0 new CDI outbreaks reported this week, for a total of 0 ongoing CDI outbreaks. 2 CDI outbreaks reported in Ottawa since September 1, 2019.

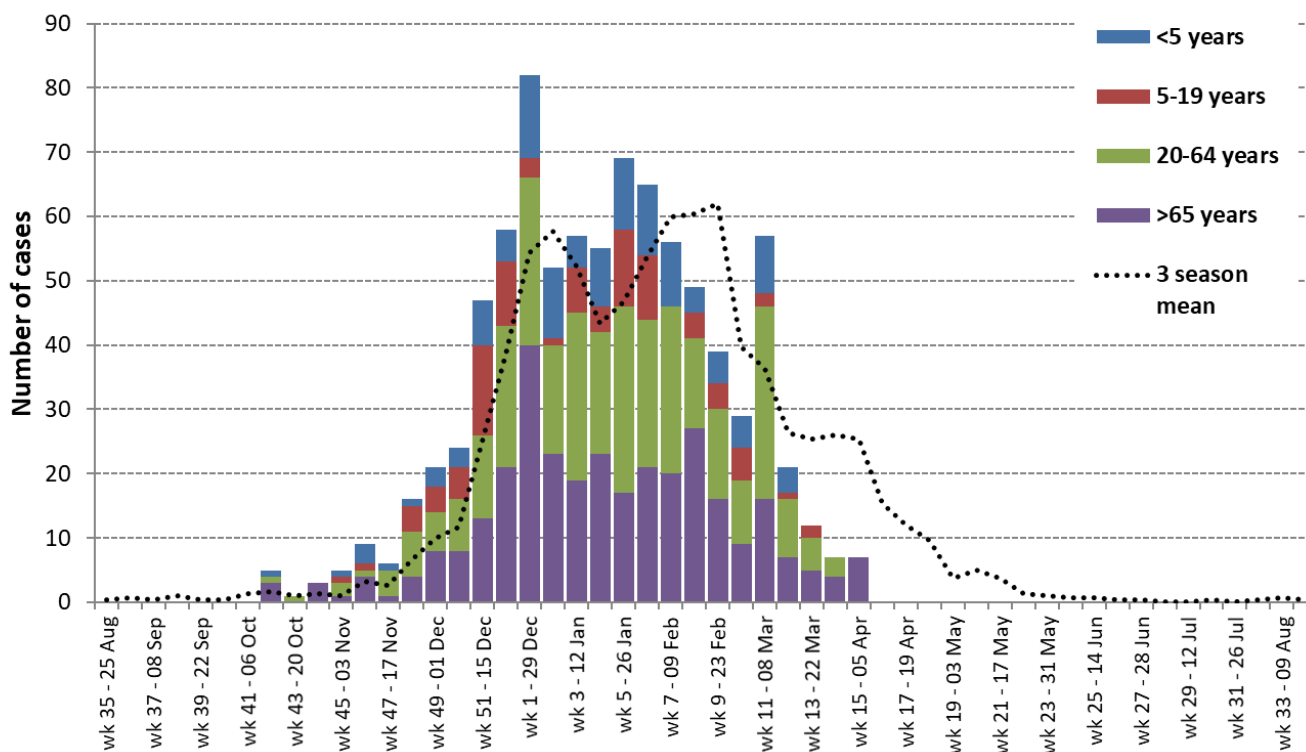
Ottawa data presented in this issue of the report are for week 15 of the current 2019-2020 influenza season, and data extraction occurred on April 15th 2020 at 7:30pm, unless otherwise stated. Furthermore, this report is based on data and information available at the time of report preparation, and may vary in previous or subsequent reports.

# 1. Lab-confirmed Influenza cases by age category<sup>1</sup>

**Table 2:** Summary of lab-confirmed cases of influenza, diagnosed in Ottawa, 2019-2020 season to date, by age category.

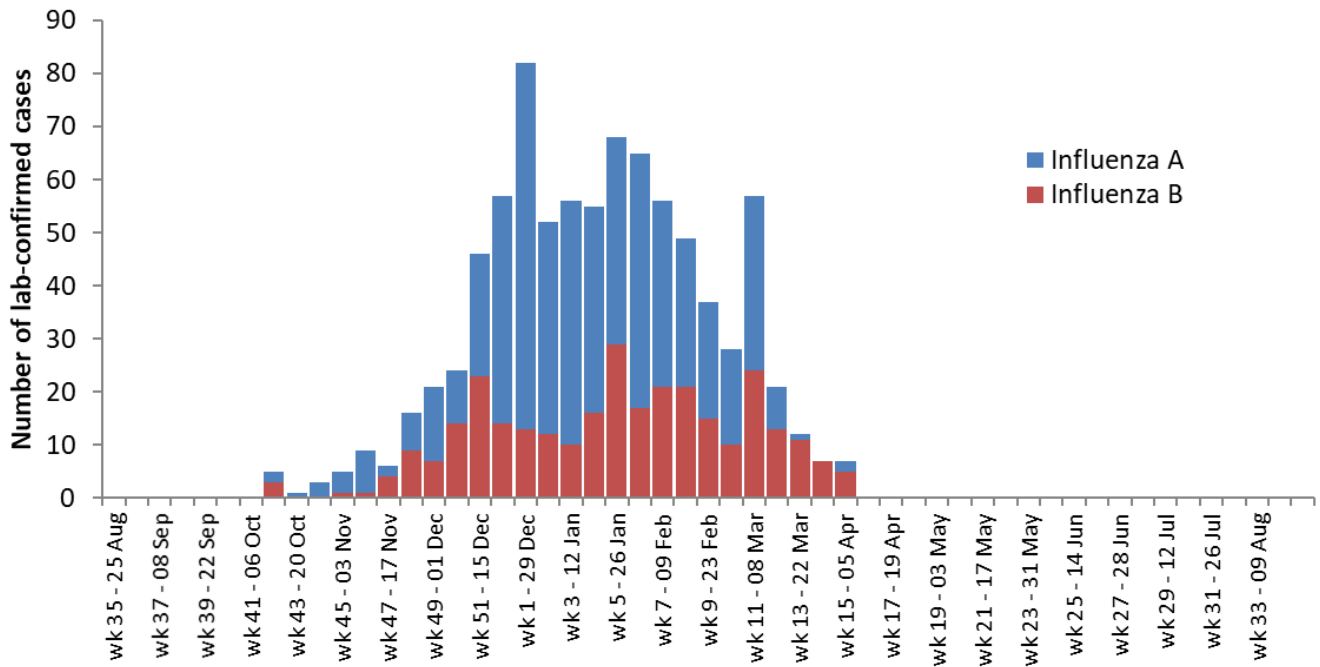
Age (years)	2019-2020 Season to date	Proportion of total lab-confirmed cases (%)	Incidence (per 100,000)
Less than 1	49	5.8%	421.2
1 to 4	73	8.6%	165.1
5 to 19	94	11.0%	57.2
20 to 64	316	37.1%	48.7
65+	320	37.6%	194.8
<b>Total influenza cases</b>	<b>852</b>		<b>82.4</b>

**Figure 1:** Number of laboratory-confirmed influenza cases reported by week of symptom onset and age group, diagnosed in Ottawa, 2019-2020 season to date and previous three-season average.



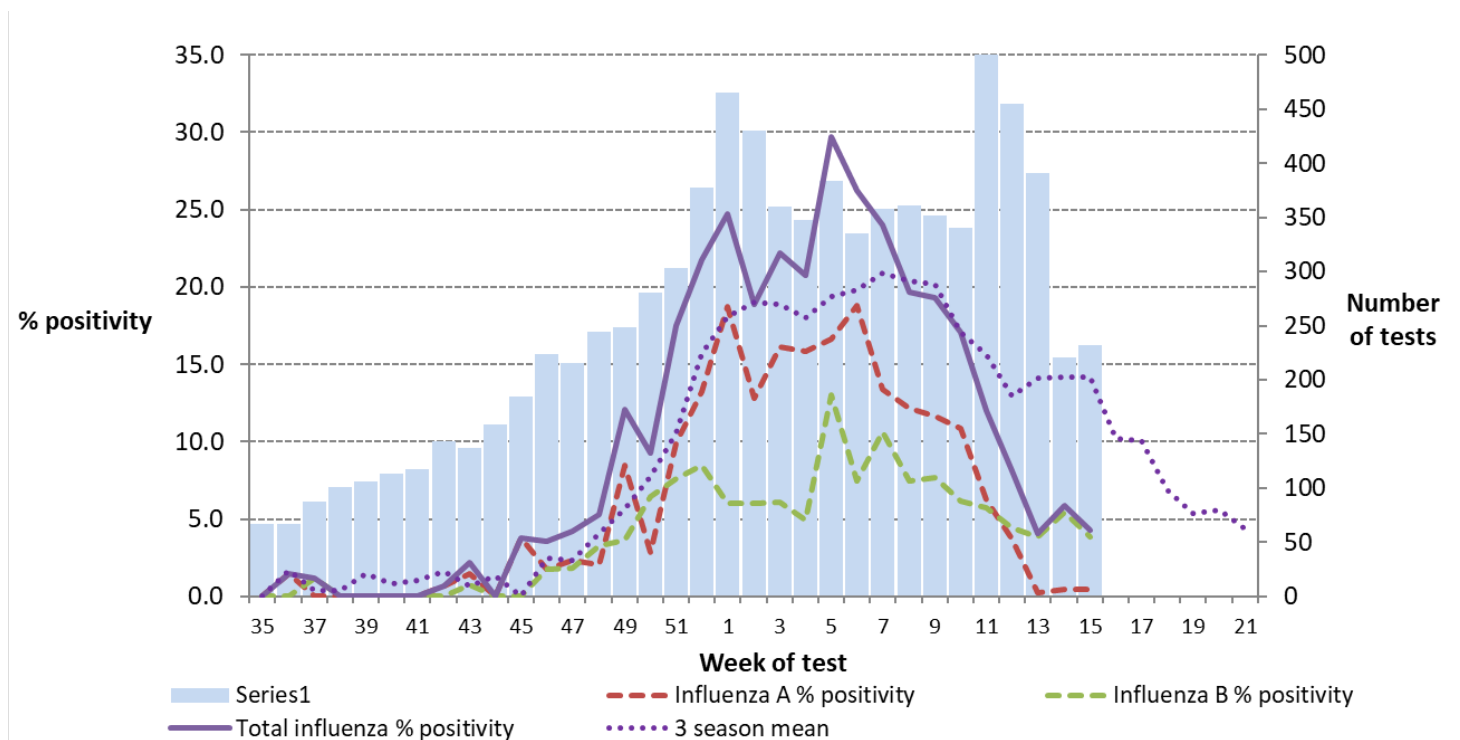
## 2. Lab-confirmed influenza cases by influenza type<sup>1</sup>

**Figure 2:** Number of laboratory-confirmed influenza cases reported by week of symptom onset and influenza type, diagnosed in Ottawa, 2019-2020 season to date.



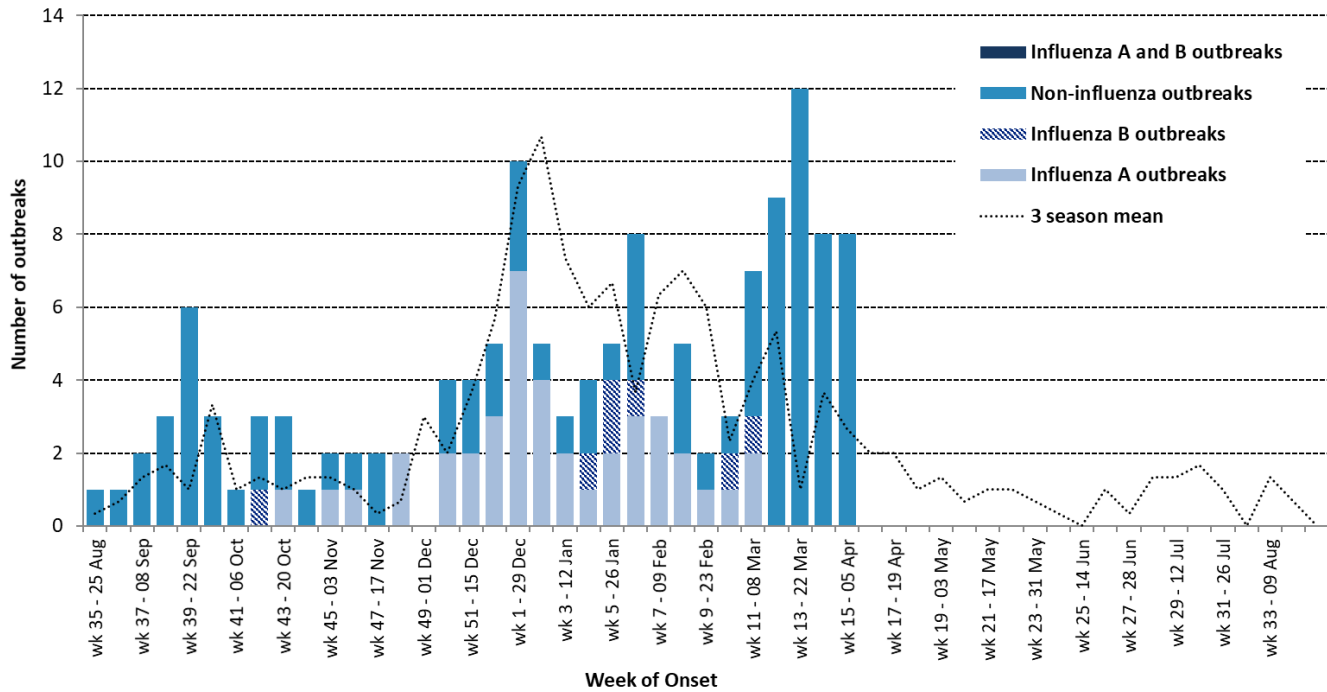
## 3. Percent of respiratory specimens that tested positive for Influenza<sup>2</sup>

**Figure 3:** Percent and number of nasopharyngeal specimens that tested positive for influenza in Ottawa, 2019-2020 season to date, by influenza type.



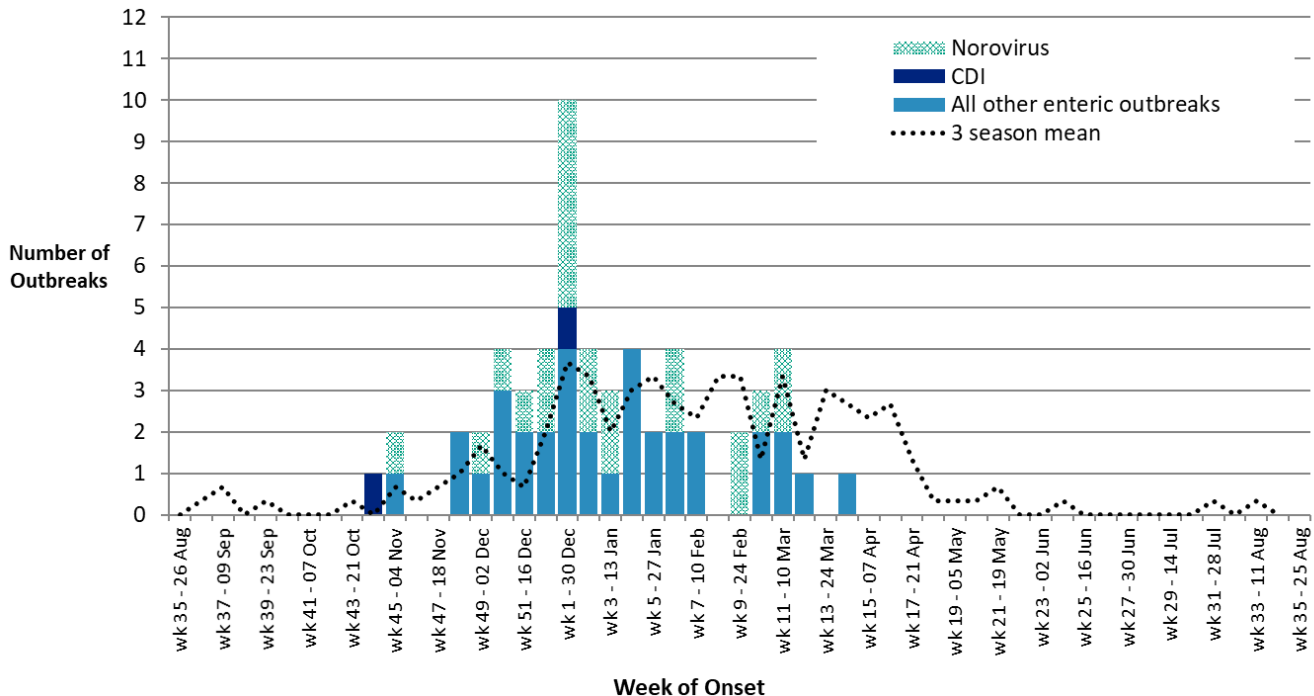
## 4. Respiratory outbreaks in institutions and public hospitals<sup>1</sup>

**Figure 4:** Respiratory outbreaks in institutions (i.e., long-term care homes, retirement homes) and public hospitals, reported in Ottawa, 2019-2020 season to date, and previous three-season average.



## 5. Gastroenteritis outbreaks in institutions and public hospitals<sup>1</sup>

**Figure 5:** Gastroenteritis outbreaks in institutions (i.e., long-term care homes, retirement homes) and public hospitals, reported in Ottawa, 2019-2020 season to date, and previous three-season average.



**Note :** There was one new enteric outbreak during week 13 but there is no information available on the causative agent. For this reason, the outbreak cannot be classified (Norovirus, CDI, Other) and does not appear in the above graph nor the data table for this figure.

## Data sources and notes:

1. Data reported to Ottawa Public Health, as recorded in integrated Public Health Information System (iPHIS), Ontario Ministry of Health and Long-Term Care (MOHLTC). Season to date data include data reported between September 1, 2019 (Week 35, 2019) and the current reporting week.

Note: *Health Protection and Promotion Act*, R.S.O. 1990 (HPPA) and the Ontario Public Health Standards: Requirements for Programs, Services, and Accountability does not require deaths among lab-confirmed cases of seasonal influenza to be reported to the local board of health. Therefore the number of deaths among lab-confirmed cases of influenza cases reported in this report only represent deaths Ottawa Public health has been made aware of at the time of report preparation. Furthermore, [lab testing](#) for influenza is only available to hospitalized patients and up to 4 patients per institutional respiratory infection outbreak.

2. Percent-positivity among viral respiratory specimens tested by Eastern Ontario Regional Laboratory Association (current reporting week) and Public Health Ontario Laboratories (previous reporting week).

Note: Additional information on respiratory viral pathogen detections among select laboratories in Canada can be accessed using [Centre for Immunization and Respiratory Infectious Diseases \(CIRID\)](#), Public Health Agency of Canada data sources

## Data tables

**Table for Figure 1:** Number of reported laboratory-confirmed influenza cases by symptom onset week and age category, diagnosed in Ottawa, 2019-2020 season to date and previous three-season average

Week	<5 years	5-19 years	20-64 years	>65 years	3 season mean
35	0	0	0	0	0
36	0	0	0	0	1
37	0	0	0	0	0
38	0	0	0	0	1
39	0	0	0	0	0
40	0	0	0	0	0
41	0	0	0	0	1
42	1	0	1	3	2
43	0	0	1	0	1
44	0	0	0	3	1
45	1	1	2	1	1
46	3	1	1	4	3
47	1	0	4	1	3
48	1	4	7	4	7
49	3	4	6	8	10
50	3	5	8	8	12
51	7	14	13	13	25
52	5	10	22	21	39
1	13	3	26	40	54
2	11	1	17	23	58
3	5	7	26	19	52
4	9	4	19	23	43
5	11	12	29	17	47
6	11	10	23	21	54
7	10	0	26	20	60
8	4	4	14	27	60
9	5	4	14	16	62

<b>Week</b>	<b>&lt;5 years</b>	<b>5-19 years</b>	<b>20-64 years</b>	<b>&gt;65 years</b>	<b>3 season mean</b>
10	5	5	10	9	40
11	9	2	30	16	36
12	4	1	9	7	26
13	0	2	5	5	25
14	0	0	3	4	26
15	0	0	0	7	25
16					15
17					12
18					10
19					4
20					5
21					4
22					1
23					1
24					1
25					1
26					0
27					0
28					0
29					0
30					0
31					0
32					0
33					1
34					0



**Table for Figure 2:** Number of laboratory-confirmed influenza cases reported by week of symptom onset and influenza type, diagnosed in Ottawa, 2019-2020 season to date.

<b>Week</b>	<b>Influenza A</b>	<b>Influenza B</b>
35	0	0
36	0	0
37	0	0
38	0	0
39	0	0
40	0	0
41	0	0
42	2	3
43	1	0
44	3	0
45	4	1
46	8	1
47	2	4
48	7	9
49	14	7
50	10	14
51	23	23
52	43	14
1	69	13
2	40	12
3	46	10
4	39	16
5	39	29
6	48	17
7	35	21
8	28	21
9	22	15
10	18	10
11	33	24
12	8	13

<b>Week</b>	<b>Influenza A</b>	<b>Influenza B</b>
13	1	11
14	0	7
15	2	5
16		
17		
18		
19		
20		
21		
22		
23		
24		
25		
26		
27		
28		
29		
30		
31		
32		
33		
34		

**Table for Figure 3:** Percent and number of naso-pharyngeal specimens submitted for laboratory testing that tested positive for influenza in Ottawa, 2019-2020 season to date and previous three-season average, by influenza type.

Week	Total number of tests	Influenza A % positivity	Influenza B % positivity	Total Influenza % positivity	3-season mean
35	67	0.0	0.0	0.0	0.0
36	67	1.5	0.0	1.5	1.7
37	87	0.0	1.1	1.1	0.4
38	101	0.0	0.0	0.0	0.4
39	106	0.0	0.0	0.0	1.5
40	113	0.0	0.0	0.0	0.8
41	117	0.0	0.0	0.0	1.0
42	143	0.7	0.0	0.7	1.6
43	137	1.5	0.7	2.2	0.7
44	159	0.0	0.0	0.0	1.3
45	184	3.8	0.0	3.8	0.0
46	224	1.8	1.8	3.6	2.5
47	215	2.3	1.9	4.2	2.3
48	244	2.0	3.3	5.3	4.0
49	248	8.5	3.6	12.1	5.6
50	280	2.9	6.4	9.3	7.8
51	303	9.9	7.6	17.5	10.5
52	377	13.3	8.5	21.8	15.7
1	465	18.7	6.0	24.7	18.1
2	430	12.8	6.0	18.8	19.0
3	360	16.1	6.1	22.2	18.9
4	347	15.9	4.9	20.7	18.0
5	384	16.7	13.0	29.7	19.4
6	335	18.8	7.5	26.3	19.8
7	358	13.4	10.6	24.0	20.9
8	361	12.2	7.5	19.7	20.4
9	352	11.6	7.7	19.3	20.2
10	340	10.9	6.2	17.1	17.0
11	608	6.3	5.8	12.0	15.6
12	455	3.7	4.4	8.1	13.0

<b>Week</b>	<b>Total number of tests</b>	<b>Influenza A % positivity</b>	<b>Influenza B % positivity</b>	<b>Total Influenza % positivity</b>	<b>3-season mean</b>
13	391	0.3	3.8	4.1	14.1
14	221	0.5	5.4	5.9	14.1
15	232	0.4	3.9	4.3	14.1
16					10.2
17					10.1
18					6.9
19					5.4
20					5.6
21					4.3
22					
23					
24					
25					
26					
27					
28					
29					
30					
31					
32					
33					
34					

**Table for Figure 4:** Respiratory outbreaks in institutions (e.g., long-term care homes, retirement homes) and public hospitals in Ottawa, 2019-2020 season to date and previous three-season average

Week	Non-influenza outbreaks	Influenza A outbreaks	Influenza B outbreaks	Influenza A & B outbreaks	3 season mean
35	1	0	0	0	0.3
36	1	0	0	0	0.7
37	2	0	0	0	1.3
38	3	0	0	0	1.7
39	6	0	0	0	1.0
40	3	0	0	0	3.3
41	1	0	0	0	1.0
42	2	0	1	0	1.3
43	2	1	0	0	1.0
44	1	0	0	0	1.3
45	1	1	0	0	1.3
46	1	1	0	0	1.0
47	2	0	0	0	0.3
48	0	2	0	0	0.7
49	0	0	0	0	3.0
50	2	2	0	0	2.0
51	2	2	0	0	3.7
52	2	3	0	0	5.7
1	3	7	0	0	9.3
2	1	4	0	0	10.7
3	1	2	0	0	7.3
4	2	1	1	0	6.0
5	1	2	2	0	6.7
6	4	3	1	0	3.7
7	0	3	0	0	6.3
8	3	2	0	0	7.0
9	1	1	0	0	6.0
10	1	1	1	0	2.3

<b>Week</b>	<b>Non-influenza outbreaks</b>	<b>Influenza A outbreaks</b>	<b>Influenza B outbreaks</b>	<b>Influenza A &amp; B outbreaks</b>	<b>3 season mean</b>
11	4	2	1	0	4.0
12	9	0	0	0	5.3
13	12	0	0	0	1.0
14	8	0	0	0	3.7
15	8	0	0	0	2.7
16					2.0
17					2.0
18					1.0
19					1.3
20					0.7
21					1.0
22					1.0
23					0.7
24					0.3
25					0.0
26					1.0
27					0.3
28					1.3
29					1.3
30					1.7
31					1.0
32					0.0
33					1.3
34					0.7

**Table for Figure 5:** Gastroenteritis outbreaks in institutions and public hospitals in Ottawa, 2019-2020 season to date and previous three-season average

<b>Week</b>	<b>CDI</b>	<b>Norovirus</b>	<b>All other enteric outbreaks</b>	<b>3 season mean</b>
35	0	0	0	0.0
36	0	0	0	0.3
37	0	0	0	0.7
38	0	0	0	0.0
39	0	0	0	0.3
40	0	0	0	0.0
41	0	0	0	0.0
42	0	0	0	0.0
43	0	0	0	0.3
44	1	0	0	0.0
45	0	1	1	0.7
46	0	0	0	0.3
47	0	0	0	0.7
48	0	0	2	1.0
49	0	1	1	1.7
50	0	1	3	1.0
51	0	1	2	0.7
52	0	2	2	2.0
1	1	5	4	3.7
2	0	2	2	3.3
3	0	2	1	2.0
4	0	0	4	3.0
5	0	0	2	3.3
6	0	2	2	2.7
7	0	0	2	2.3
8	0	0	0	3.3
9	0	2	0	3.3
10	0	1	2	1.3

Week	CDI	Norovirus	All other enteric outbreaks	3 season mean
11	0	2	2	3.3
12	0	0	1	1.3
13*	0	0	0	3.0
14	0	0	1	2.7
15	0	0	0	2.3
16				2.7
17				1.3
18				0.3
19				0.3
20				0.3
21				0.7
22				0.0
23				0.0
24				0.3
25				0.0
26				0.0
27				0.0
28				0.0
29				0.0
30				0.0
31				0.3
32				0.0
33				0.3
34				0.0

**Note :** \* There was one new enteric outbreak during week 13 but there is no information available on the causative agent. For this reason, the outbreak does not appear in this data table.