






Ottawa Public Health Respiratory and Enteric Surveillance Report

March 1–7, 2020 (Week 10)

This report provides an overview of the current Influenza season in the City of Ottawa, Ontario. For information on the current influenza season across Ontario see the [Ontario Respiratory Pathogen Bulletin](#), and for Canada see the [FluWatch report](#). Regional syndromic surveillance data on Influenza like Illness (ILI), including hospital admissions and emergency department visits, can be accessed through [ILI mapper](#). Information on past Influenza seasons in the City of Ottawa is available at www.OttawaPublicHealth.ca/FluReport.

Table 1a: Ottawa Respiratory Activity Highlights

Data Source	Activity Level Compared To Previous Week	Details
Overall Assessment (week 10)	Lower than last week. 	Influenza activity in week 10 was lower compared to week 9.
Lab-confirmed cases of influenza¹ (2019-2020 season to date)	Lower than last week. 	748 cases have been reported since Sept 1; 501 (67.0%) were influenza A, 240 (32.1%) were influenza B, and 7 (0.8%) were influenza A & B. 34 of the influenza A cases were subtyped as H3, 6 as H3N2, and 46 as H1N1. Median age (overall): 54 years Median age (influenza A): 62 years Median age (influenza B): 26 years
Influenza percent positivity² (week 10)	Lower than last week. 	The percent positivity of all respiratory samples tested for influenza is 17.1%.
Influenza related mortality¹ (2019-2020 season to date)	Similar to last week. 	OPH is aware of 3 influenza-related deaths this season.
Respiratory outbreaks in institutions and public hospitals¹ (2019-2020 season to date)	Similar to last week. 	1 new influenza outbreak reported this week, with a total of 2 ongoing influenza outbreaks and 2 ongoing non-influenza respiratory outbreaks. Since September 1, 2019, 37 influenza A outbreaks, 6 influenza B outbreaks, and 48 non-influenza respiratory outbreaks have been reported in Ottawa.


Data Source	Activity Level Compared To Previous Week	Details
Ottawa emergency room visit trends for respiratory illness (ACES) (week 10)	Higher than last week. 	6.755% of all ED visits were related to respiratory illness.

Table 1b: Ottawa Gastroenteritis Activity Highlights¹



Data Source	Activity Level Compared To Previous Week	Details
Gastroenteritis outbreaks in institutions and public hospitals ¹ (2019-2020 season to date)	Higher than last week. 	3 new enteric outbreaks reported this week, with a total of 4 ongoing enteric outbreaks. 52 enteric outbreaks reported in Ottawa since September 1, 2019.

Table 1c: Ottawa Clostridium Difficile Infection (CDI) Outbreaks in Public Hospital Highlights¹

Data Source	Activity Level Compared To Previous Week	Details
Clostridium difficile infection (CDI) outbreaks in public hospitals ¹ (2019-2020 season to date)	Similar to last week. 	0 new CDI outbreaks reported this week, for a total of 0 ongoing CDI outbreaks. 2 CDI outbreaks reported in Ottawa since September 1, 2019.

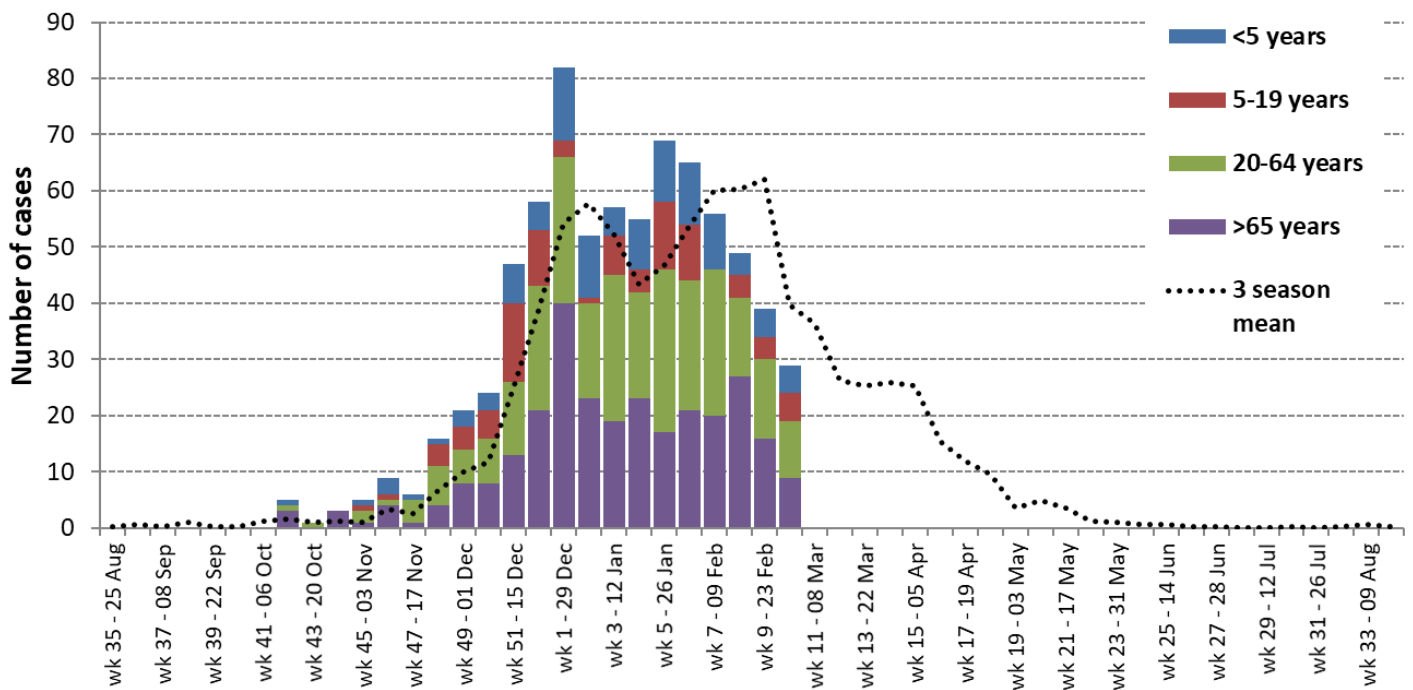
Ottawa data presented in this issue of the report are for Week 10 of the current 2019-2020 influenza season, and data extraction occurred on March 11th 2020 at 2:45pm, unless otherwise stated. Furthermore, this report is based on data and information available at the time of report preparation, and may vary in previous or subsequent reports.

1. Lab-confirmed Influenza cases by age category¹

Table 2: Summary of lab-confirmed cases of influenza, diagnosed in Ottawa, 2019-2020 season to date, by age category.

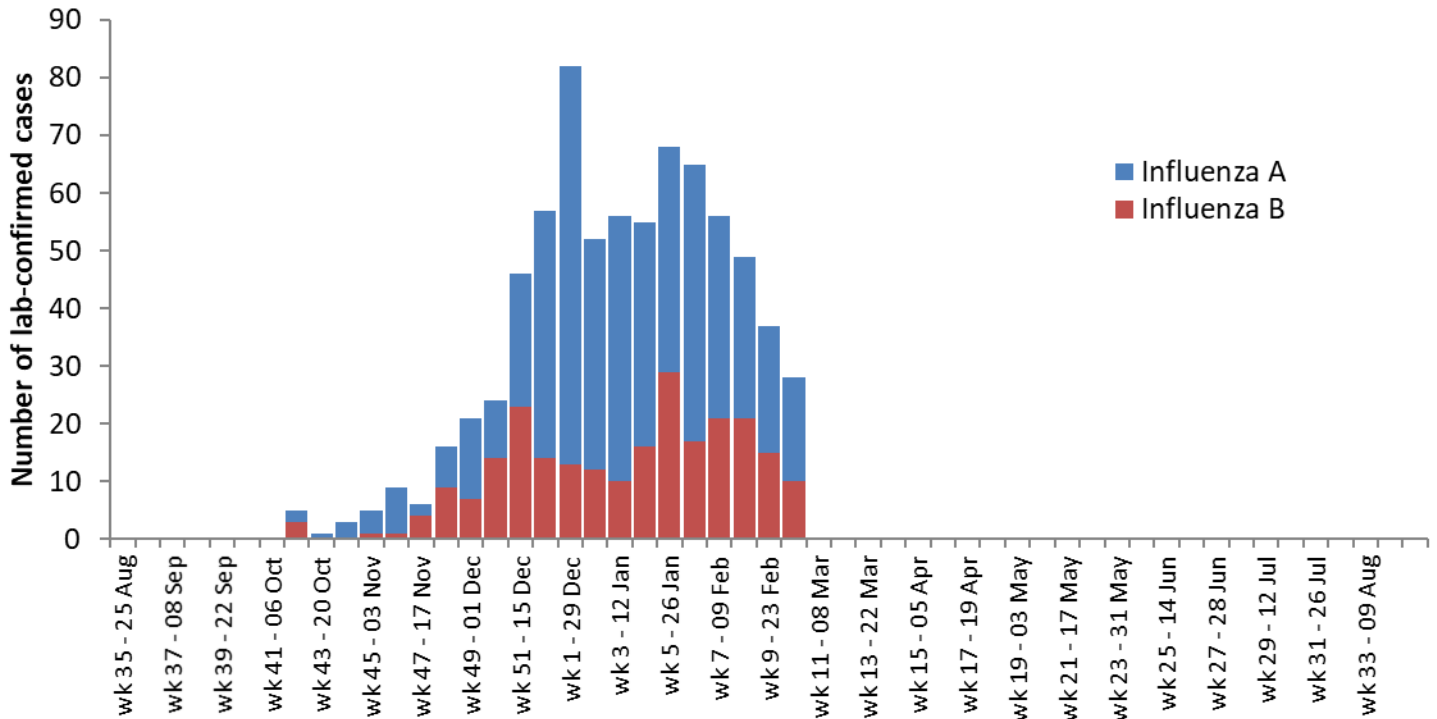
Age (years)	2019-2020 Season to date	Proportion of total lab-confirmed cases (%)	Incidence (per 100,000)
Less than 1	43	5.7%	369.6
1 to 4	66	8.8%	149.3
5 to 19	89	11.9%	54.1
20 to 64	269	36.0%	41.4
65+	281	37.6%	171.1
Total influenza cases	748		72.4

Figure 1: Number of laboratory-confirmed influenza cases reported by week of symptom onset and age group, diagnosed in Ottawa, 2019-2020 season to date and previous three-season average.



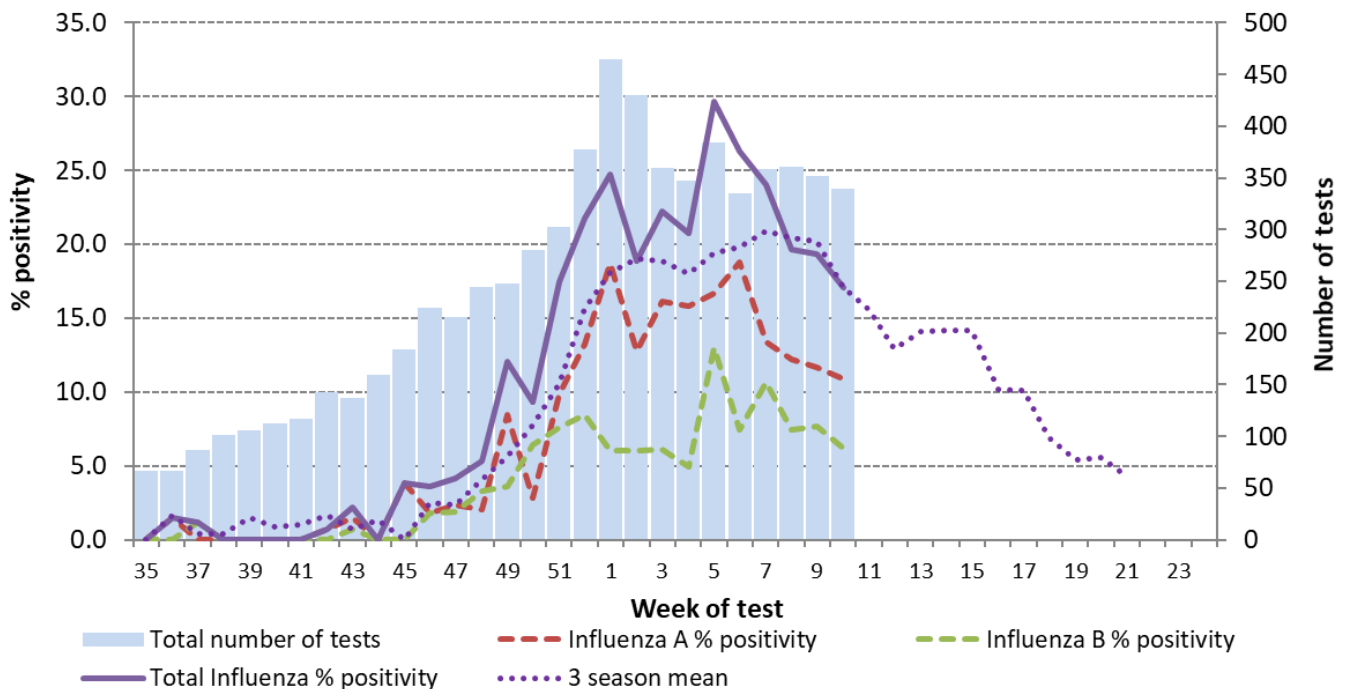
2. Lab-confirmed influenza cases by influenza type¹

Figure 2: Number of laboratory-confirmed influenza cases reported by week of symptom onset and influenza type, diagnosed in Ottawa, 2019-2020 season to date.



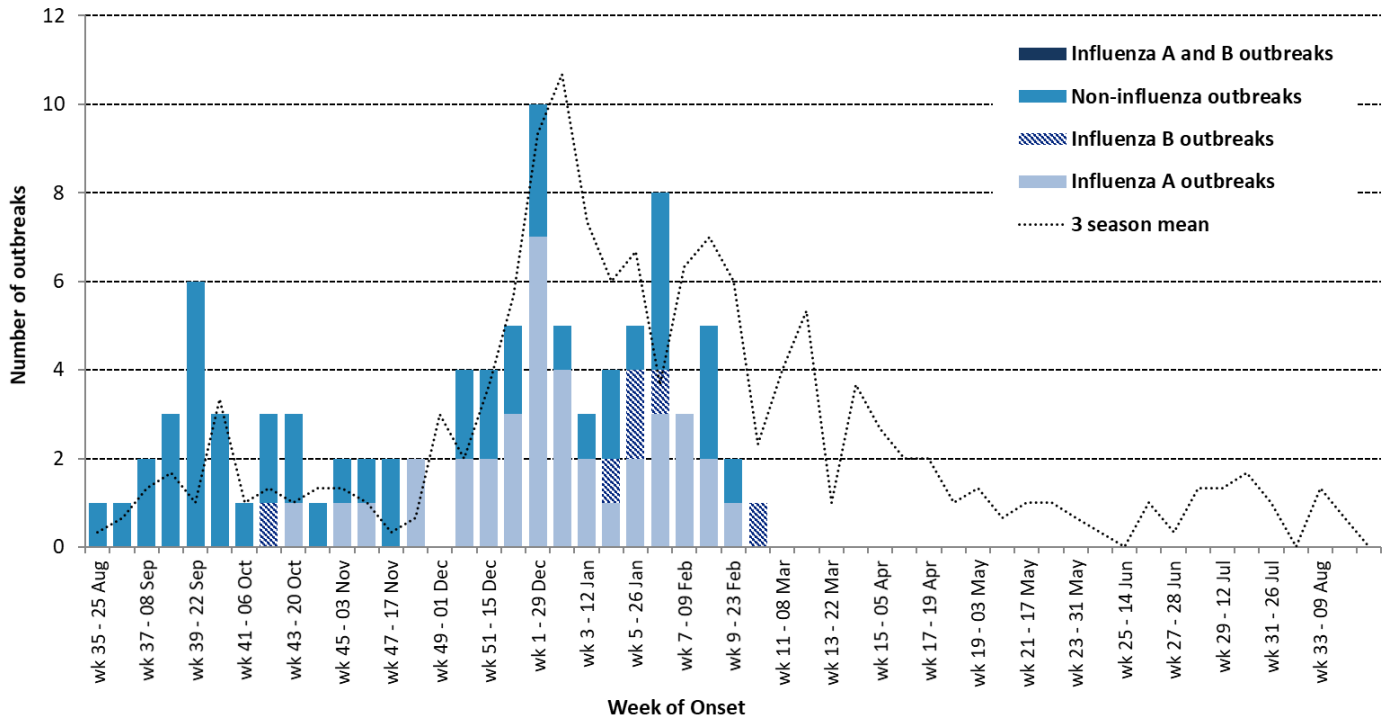
3. Percent of respiratory specimens that tested positive for Influenza²

Figure 3: Percent and number of nasopharyngeal specimens that tested positive for influenza in Ottawa, 2019-2020 season to week 10, by influenza type



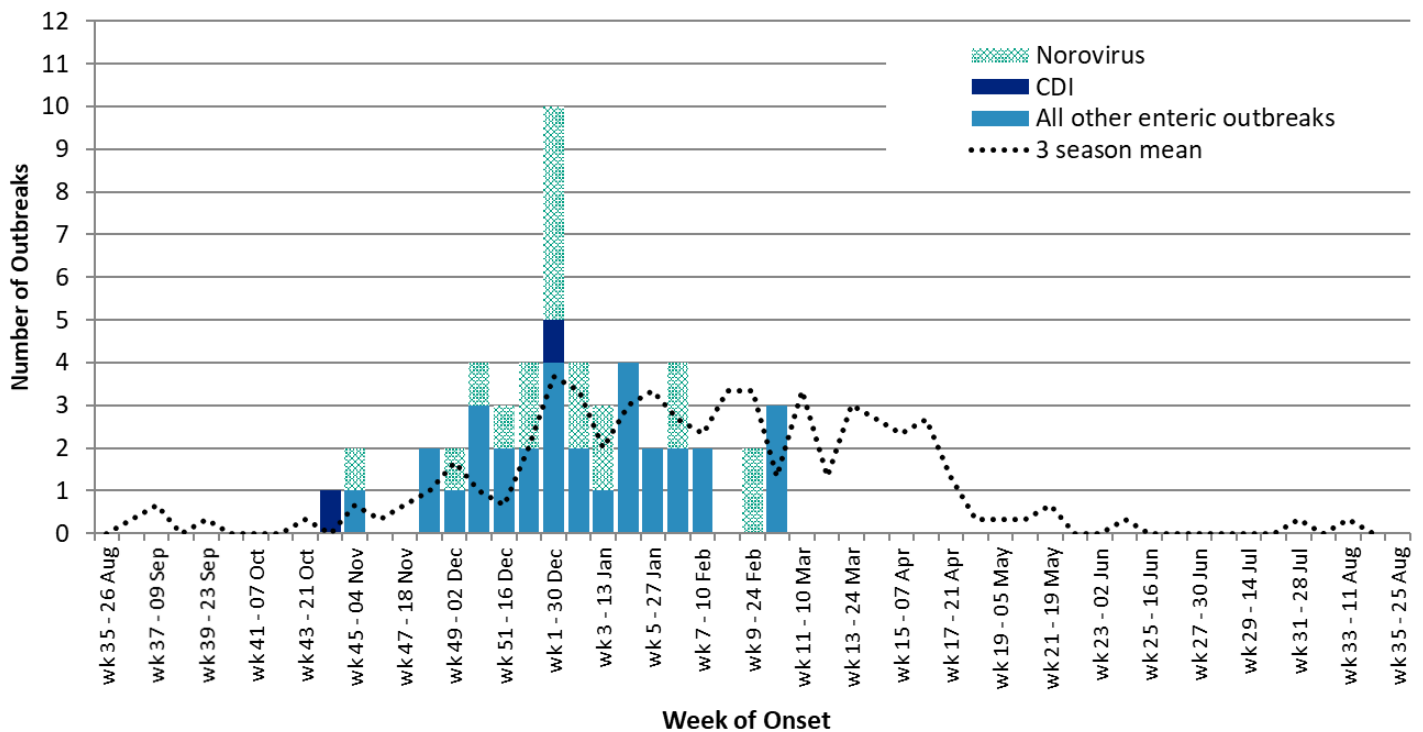
4. Respiratory outbreaks in institutions and public hospitals¹

Figure 4: Respiratory outbreaks in institutions (i.e., long-term care homes, retirement homes) and public hospitals, reported in Ottawa, 2019-2020 season to date, and previous three-season average



5. Gastroenteritis outbreaks in institutions and public hospitals¹

Figure 5: Gastroenteritis outbreaks in institutions (i.e., long-term care homes, retirement homes) and public hospitals, reported in Ottawa, 2019-2020 season to date, and previous three-season average



Data sources and notes:

1. Data reported to Ottawa Public Health, as recorded in integrated Public Health Information System (iPHIS), Ontario Ministry of Health and Long-Term Care (MOHLTC). Season to date data include data reported between September 1, 2019 (Week 35, 2019) and the current reporting week.

Note: *Health Protection and Promotion Act*, R.S.O. 1990 (HPPA) and the Ontario Public Health Standards: Requirements for Programs, Services, and Accountability does not require deaths among lab-confirmed cases of seasonal influenza to be reported to the local board of health. Therefore the number of deaths among lab-confirmed cases of influenza cases reported in this report only represent deaths Ottawa Public health has been made aware of at the time of report preparation. Furthermore, [lab testing](#) for influenza is only available to hospitalized patients and up to 4 patients per institutional respiratory infection outbreak.

2. Percent-positivity among viral respiratory specimens tested by Eastern Ontario Regional Laboratory Association (current reporting week) and Public Health Ontario Laboratories (previous reporting week).

Note: Additional information on respiratory viral pathogen detections among select laboratories in Canada can be accessed using [Centre for Immunization and Respiratory Infectious Diseases \(CIRID\)](#), Public Health Agency of Canada data sources

3. Respiratory-related ED visits for City of Ottawa Health Unit (seven day average for current reporting week). ILI Mapper. KFL&A Public Health Informatics, Kingston, ON.

Note: Data collected by the Acute Care Enhanced Surveillance (ACES) system may disproportionately represent certain populations within a health unit, and therefore, may not accurately depict the full picture of influenza activity for the whole health unit.

Data tables

Table for Figure 1: Number of reported laboratory-confirmed influenza cases by symptom onset week and age category, diagnosed in Ottawa, 2019-2020 season to date and previous three-season average

Week	<5 years	5-19 years	20-64 years	>65 years	3 season mean
35	0	0	0	0	0
36	0	0	0	0	1
37	0	0	0	0	0
38	0	0	0	0	1
39	0	0	0	0	0
40	0	0	0	0	0
41	0	0	0	0	1
42	1	0	1	3	2
43	0	0	1	0	1
44	0	0	0	3	1
45	1	1	2	1	1
46	3	1	1	4	3
47	1	0	4	1	3
48	1	4	7	4	7
49	3	4	6	8	10
50	3	5	8	8	12
51	7	14	13	13	25
52	5	10	22	21	39
1	13	3	26	40	54
2	11	1	17	23	58
3	5	7	26	19	52
4	9	4	19	23	43
5	11	12	29	17	47
6	11	10	23	21	54
7	10	0	26	20	60
8	4	4	14	27	60
9	5	4	14	16	62

Week	<5 years	5-19 years	20-64 years	>65 years	3 season mean
10	5	5	10	9	40
11					36
12					26
13					25
14					26
15					25
16					15
17					12
18					10
19					4
20					5
21					4
22					1
23					1
24					1
25					1
26					0
27					0
28					0
29					0
30					0
31					0
32					0
33					1
34					0

Table for Figure 2: Number of laboratory-confirmed influenza cases reported by week of symptom onset and influenza type, diagnosed in Ottawa, 2019-2020 season to date.

Week	Influenza A	Influenza B
35	0	0
36	0	0
37	0	0
38	0	0
39	0	0
40	0	0
41	0	0
42	2	3
43	1	0
44	3	0
45	4	1
46	8	1
47	2	4
48	7	9
49	14	7
50	10	14
51	23	23
52	43	14
1	69	13
2	40	12
3	46	10
4	39	16
5	39	29
6	48	17
7	35	21
8	28	21
9	22	15
10	18	10
11		
12		

Week	Influenza A	Influenza B
13		
14		
15		
16		
17		
18		
19		
20		
21		
22		
23		
24		
25		
26		
27		
28		
29		
30		
31		
32		
33		
34		

Table for Figure 3: Percent and number of naso-pharyngeal specimens submitted for laboratory testing that tested positive for influenza in Ottawa, 2019-2020 season to week 10, by influenza type.

Week	Total number of tests	Influenza A % positivity	Influenza B % positivity	Total Influenza % positivity	3-season mean
35	67	0.0	0.0	0.0	0.0
36	67	1.5	0.0	1.5	1.7
37	87	0.0	1.1	1.1	0.4
38	101	0.0	0.0	0.0	0.4
39	106	0.0	0.0	0.0	1.5
40	113	0.0	0.0	0.0	0.8
41	117	0.0	0.0	0.0	1.0
42	143	0.7	0.0	0.7	1.6
43	137	1.5	0.7	2.2	0.7
44	159	0.0	0.0	0.0	1.3
45	184	3.8	0.0	3.8	0.0
46	224	1.8	1.8	3.6	2.5
47	215	2.3	1.9	4.2	2.3
48	244	2.0	3.3	5.3	4.0
49	248	8.5	3.6	12.1	5.6
50	280	2.9	6.4	9.3	7.8
51	303	9.9	7.6	17.5	10.5
52	377	13.3	8.5	21.8	15.7
1	465	18.7	6.0	24.7	18.1
2	430	12.8	6.0	18.8	19.0
3	360	16.1	6.1	22.2	18.9
4	347	15.9	4.9	20.7	18.0
5	384	16.7	13.0	29.7	19.4
6	335	18.8	7.5	26.3	19.8
7	358	13.4	10.6	24.0	20.9
8	361	12.2	7.5	19.7	20.4
9	352	11.6	7.7	19.3	20.2
10	340	10.9	6.2	17.1	17.0
11					15.6
12					13.0
13					14.1

Week	Total number of tests	Influenza A % positivity	Influenza B % positivity	Total Influenza % positivity	3-season mean
14					14.1
15					14.1
16					10.2
17					10.1
18					6.9
19					5.4
20					5.6
21					4.3
22					
23					
24					
25					
26					
27					
28					
29					
30					
31					
32					
33					
34					

Table for Figure 4: Respiratory outbreaks in institutions (e.g., long-term care homes, retirement homes) and public hospitals, reported in Ottawa, 2019-2020 season to date, and previous three-season average

Week	Non-influenza outbreaks	Influenza A outbreaks	Influenza B outbreaks	Influenza A & B outbreaks	3 season mean
35	1	0	0	0	0.3
36	1	0	0	0	0.7
37	2	0	0	0	1.3
38	3	0	0	0	1.7
39	6	0	0	0	1.0
40	3	0	0	0	3.3
41	1	0	0	0	1.0
42	2	0	1	0	1.3
43	2	1	0	0	1.0
44	1	0	0	0	1.3
45	1	1	0	0	1.3
46	1	1	0	0	1.0
47	2	0	0	0	0.3
48	0	2	0	0	0.7
49	0	0	0	0	3.0
50	2	2	0	0	2.0
51	2	2	0	0	3.7
52	2	3	0	0	5.7
1	3	7	0	0	9.3
2	1	4	0	0	10.7
3	1	2	0	0	7.3
4	2	1	1	0	6.0
5	1	2	2	0	6.7
6	4	3	1	0	3.7
7	0	3	0	0	6.3
8	3	2	0	0	7.0
9	1	1	0	0	6.0
10	0	0	1	0	2.3

Week	Non-influenza outbreaks	Influenza A outbreaks	Influenza B outbreaks	Influenza A & B outbreaks	3 season mean
11					4.0
12					5.3
13					1.0
14					3.7
15					2.7
16					2.0
17					2.0
18					1.0
19					1.3
20					0.7
21					1.0
22					1.0
23					0.7
24					0.3
25					0.0
26					1.0
27					0.3
28					1.3
29					1.3
30					1.7
31					1.0
32					0.0
33					1.3
34					0.7

Table for Figure 5: Gastroenteritis outbreaks in institutions and public hospitals, reported in Ottawa, 2019-2020 season to date, and previous three-season average

Week	CDI	Norovirus	All other enteric outbreaks	3 season mean
35	0	0	0	0.0
36	0	0	0	0.3
37	0	0	0	0.7
38	0	0	0	0.0
39	0	0	0	0.3
40	0	0	0	0.0
41	0	0	0	0.0
42	0	0	0	0.0
43	0	0	0	0.3
44	1	0	0	0.0
45	0	1	1	0.7
46	0	0	0	0.3
47	0	0	0	0.7
48	0	0	2	1.0
49	0	1	1	1.7
50	0	1	3	1.0
51	0	1	2	0.7
52	0	2	2	2.0
1	1	5	4	3.7
2	0	2	2	3.3
3	0	2	1	2.0
4	0	0	4	3.0
5	0	0	2	3.3
6	0	2	2	2.7
7	0	0	2	2.3
8	0	0	0	3.3
9	0	2	0	3.3
10	0	0	3	1.3

Week	CDI	Norovirus	All other enteric outbreaks	3 season mean
11				3.3
12				1.3
13				3.0
14				2.7
15				2.3
16				2.7
17				1.3
18				0.3
19				0.3
20				0.3
21				0.7
22				0.0
23				0.0
24				0.3
25				0.0
26				0.0
27				0.0
28				0.0
29				0.0
30				0.0
31				0.3
32				0.0
33				0.3
34				0.0