



# COVID-19 Epidemiology Update

OTTAWA PUBLIC HEALTH. Report compiled on April 13, 2020, 11:00 am

## Contents

Purpose .....	0
Summary .....	0
Cases Over Time.....	1
Case Characteristics.....	2
Severity of Cases.....	2
Exposure Settings.....	3
Outbreaks .....	4
Data Notes & Sources .....	4
Data Tables .....	5

## Purpose

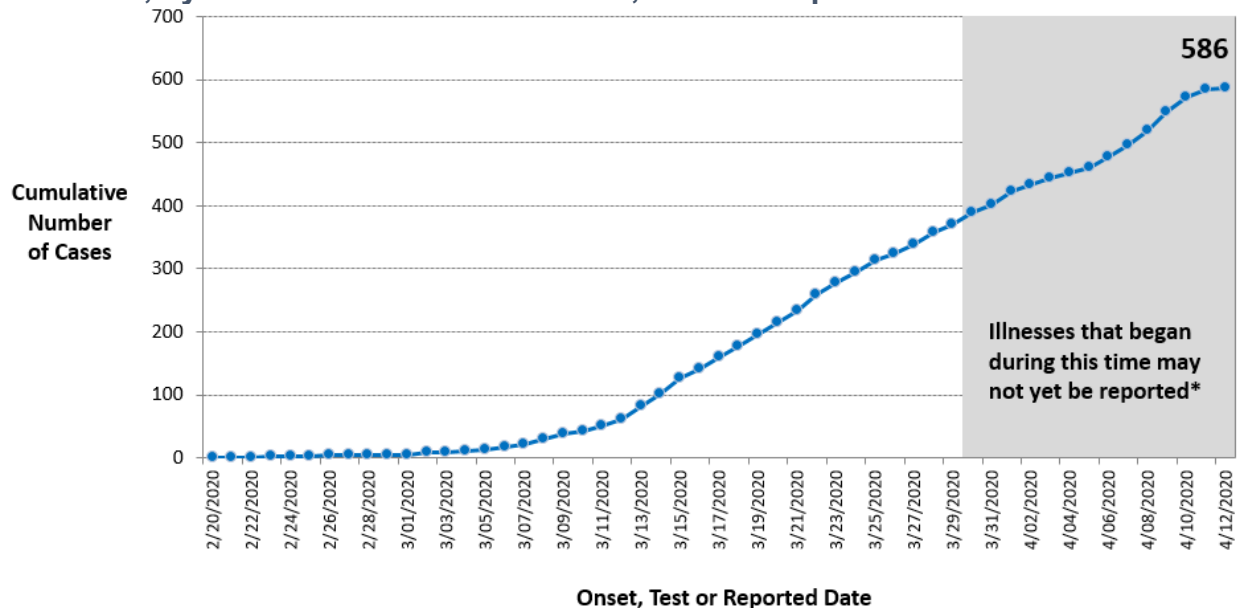
This daily report provides an epidemiologic summary of COVID-19 activity in Ottawa to date. The report includes the most current information available from the integrated Public Health Information System (iPHIS) and a chart review of COVID-19 cases as of 4:00 p.m. April 12, 2020.

## Summary

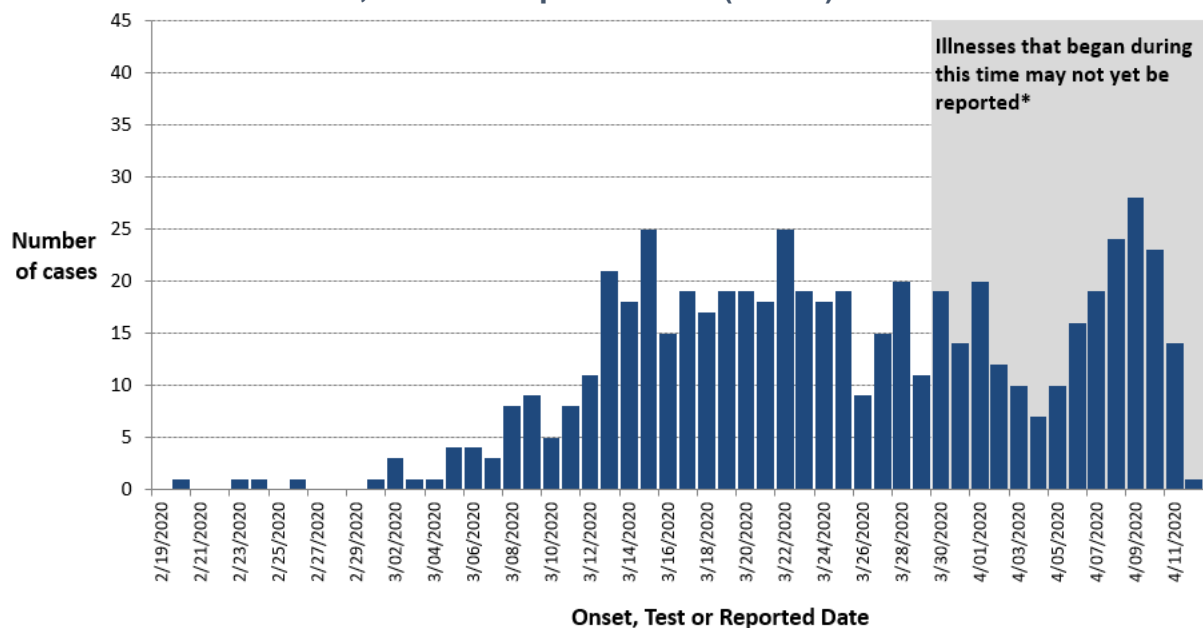
- 586 laboratory-confirmed cases, including 11 deaths, have been reported in Ottawa.
- This includes 25 new cases and 0 new deaths since the previous report.
- 15% of cases have been hospitalized (cumulative), including 5% in intensive care (cumulative).
- The median age of cases is 48 years (range, 1 to 102 years).
- There are 13 ongoing outbreaks in [institutions](#).
- The most common reported exposure settings for cases include: 27% with close contact with a case only, 23% with no travel and no known contact with a case, 20% with travel only, and 24% with exposure information pending.

## Cases Over Time

**Figure 1. Cumulative epidemiological curve of Ottawa residents with confirmed COVID-19, by the EARLIEST of onset date, test and reported date**



**Figure 2. Epidemiological curve of Ottawa residents with confirmed COVID-19, by the EARLIEST of onset, test and reported date (n=586)**



**Notes for Figure 1 and 2:**

1. Data are from iPHIS and a chart review of individuals with COVID-19 -positive laboratory results as of 4:00 p.m. on April 12, 2020.
2. The onset date is the earliest of symptom onset, laboratory testing, and reporting dates. This means that in the graphs, cases are shown based on when the person's symptoms started, or if that is not known, the date that they were tested. If the test date is not known, the date that the case was reported to public health is used. As the case is investigated and more information is available, the dates in the graph are updated.
3. Confirmed cases are those with a confirmed COVID-19 laboratory result as per the Ministry of Health Public health management of cases and contacts of COVID-19 in Ontario. March 25, 2020 version 6.0.
4. A patient's exposure may have occurred up to 14 days prior to onset of symptoms.
5. \*Symptomatic cases occurring in approximately the last 14 days are likely under-reported due to the time for individuals to seek medical assessment, availability of testing, and receipt of test results.



## Case Characteristics

**Table 1. Summary of confirmed Ottawa cases**

Measure	Number	Percentage
Case count	586	-
Change from previous report	25	4% increase
Age, median (range)	48 years (1-102)	-
Age		
<5 years	3	1%
5 to 19 years	11	2%
20 to 44 years	230	39%
45 to 64 years	209	36%
65 years and older	133	23%
Unknown	0	0%
Gender		
Female	305	52%
Male	280	48%
Unknown	1	<1%
Health care workers and first responders <sup>3</sup>	59	10%

Notes:

1. Data are from iPHIS and a chart review of individuals with COVID-19 -positive laboratory results as of 4:00 p.m. on April 12, 2020.
2. Confirmed cases are those with a confirmed COVID-19 laboratory result as per the Ministry of Health Public health management of cases and contacts of COVID-19 in Ontario. March 25, 2020 version 6.0.
3. Previous reports (April 5 to 10) misclassified some cases as health care workers. This error has been corrected as of April 11, 2020.

## Severity of Cases

**Table 2. Severity of confirmed Ottawa cases**

Measure	Number	Percentage
<b>All cases</b>	<b>586</b>	
Cumulative hospitalized	88	15%
Currently in hospital	41	7%
Cumulative intensive care	27	5%
Currently in intensive care	14	2%
Deaths	11	2%
Resolved <sup>4</sup>	198	34%

Notes:

1. Data are taken from chart review of individuals with CoV-positive laboratory results, consulted at 4:00 p.m. on April 12, 2020.
2. Confirmed cases are those with a confirmed COVID-19 laboratory result as per the Ministry of Health Public health management of cases and contacts of COVID-19 in Ontario. March 25, 2020 version 6.0.
3. Intensive care patients are a subset of hospitalized patients.
4. Resolved cases are persons whose symptoms have resolved and who have been discharged from isolation as per the Ministry of Health Public Health Guidance on Testing and Clearing Cases. March 26, 2020. version 2.0.



**Table 3. Age among cumulative hospitalized and intensive care confirmed Ottawa cases (n=586)**

Measure	Cumulative Hospitalized		Cumulative intensive care	
	Number	Percentage	Number	Percentage
Case count	88	15%	27	5%
Age, median (range)	66 years (29 to 97)		62 years (37 to 83)	
Age				
<5 years	0	0%	0	0%
5 to 19 years	0	0%	0	0%
20 to 44 years	10	11%	4	15%
45 to 64 years	32	36%	10	37%
65 years and older	46	52%	13	48%

Notes:

1. Data are taken from chart review of individuals with CoV-positive laboratory results, consulted at 4:00 p.m. on April 12, 2020.
2. Intensive care patients are a subset of hospitalized patients.
3. Confirmed cases are those with a confirmed COVID-19 laboratory result as per the Ministry of Health Public health management of cases and contacts of COVID-19 in Ontario. March 25, 2020 version 6.0.

### Exposure Settings

**Table 4. Exposures of confirmed Ottawa COVID-19 cases**

Exposure	Number	Percentage
Travel only	115	20%
Travel and contact with a case	38	6%
Contact with a case only	159	27%
No travel and no known contact with a known case	136	23%
Undetermined/pending	138	24%
<b>TOTAL</b>	<b>586</b>	

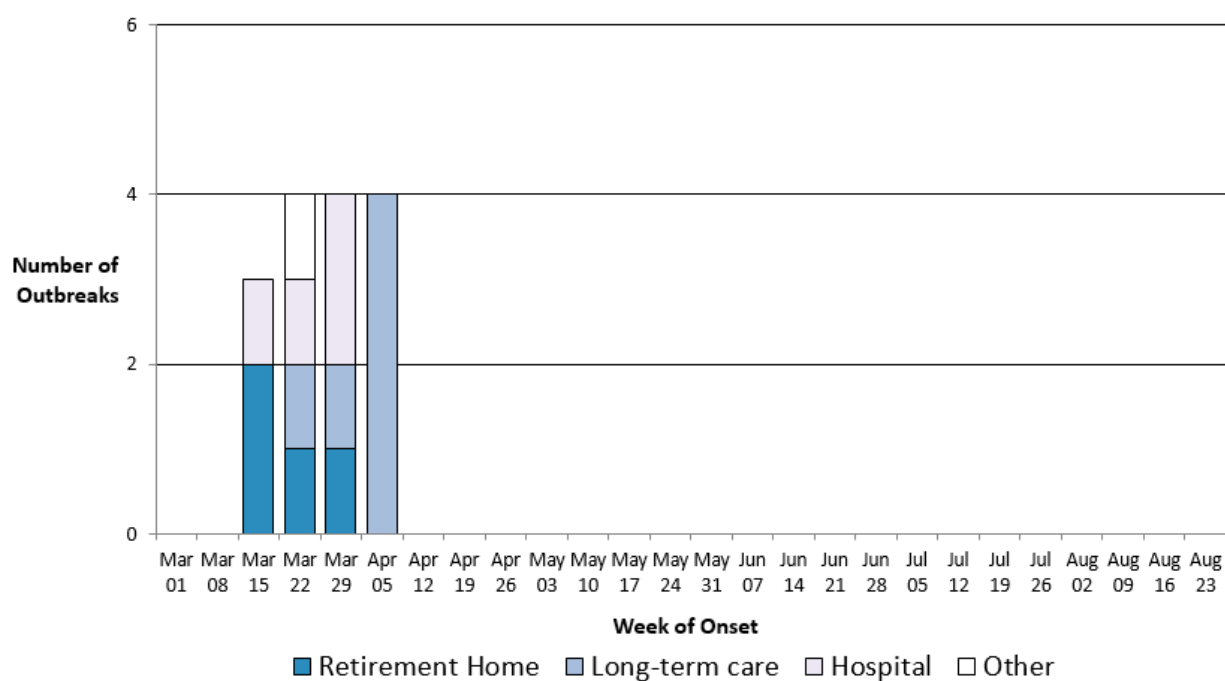
Notes:

1. Data as of 4:00 p.m. on April 12, 2020. Investigations are ongoing.
2. Confirmed cases are those with a confirmed COVID-19 laboratory result as per the Ministry of Health Public health management of cases and contacts of COVID-19 in Ontario. March 25, 2020 version 6.0.



## Outbreaks

**Figure 3. Total number of COVID-19 outbreaks in Ottawa institutions<sup>2</sup>**



1. Data as of 4:00 pm on April 12, 2020. Two outbreaks are closed and 13 are active. Investigation and data entry are ongoing.
2. Institutions include long-term care homes, retirement homes, group homes (other) and public hospitals.

## Data Notes & Sources

Data extracted represent a snapshot at the time of extraction and may differ in previous or subsequent reports. These data sources are used:

- 1) Case information
  - a. Ontario Ministry of Health, integrated Public Health Information System (iPHIS), extracted by Ottawa Public Health at 4:00 p.m. each day. iPHIS is a dynamic disease reporting system that allows for ongoing updates to data previously entered. Data extracted from the iPHIS database represent a snapshot at the time of extraction and can be different in previous or subsequent reports.
  - b. OPH Public Health Medical Unit case management chart review

**Please use the following citation when referencing this document:**

Ottawa Public Health. COVID-19 Epidemiology Update. April 13, 2020. Ottawa (ON): Ottawa Public Health; 2020.

**For further information about COVID-19 in Ottawa,** visit [ottawapublichealth.ca](https://ottawapublichealth.ca).



## Data Tables

### Data Table for Figures 1 and 2

<b>Earliest of Onset, Test or Reported Date</b>	Figure 1. Cumulative epidemiological curve of Ottawa residents with confirmed COVID-19	Figure 2. Epidemiological curve of Ottawa residents with confirmed COVID-19
	Total Confirmed COVID-19 Cases	Confirmed COVID-19 Cases by Date
2/19/2020	0	0
2/20/2020	1	1
2/21/2020	1	0
2/22/2020	1	0
2/23/2020	2	1
2/24/2020	3	1
2/25/2020	3	0
2/26/2020	4	1
2/27/2020	4	0
2/28/2020	4	0
2/29/2020	4	0
3/01/2020	5	1
3/02/2020	8	3
3/03/2020	9	1
3/04/2020	10	1
3/05/2020	14	4
3/06/2020	18	4
3/07/2020	21	3
3/08/2020	29	8
3/09/2020	38	9
3/10/2020	43	5
3/11/2020	51	8
3/12/2020	62	11
3/13/2020	83	21
3/14/2020	101	18
3/15/2020	126	25
3/16/2020	141	15
3/17/2020	160	19



3/18/2020	177	17
3/19/2020	196	19
3/20/2020	215	19
3/21/2020	233	18
3/22/2020	258	25
3/23/2020	277	19
3/24/2020	295	18
3/25/2020	314	19
3/26/2020	323	9
3/27/2020	338	15
3/28/2020	358	20
3/29/2020	369	11
3/30/2020	388	19
3/31/2020	402	14
4/01/2020	422	20
4/02/2020	434	12
4/03/2020	444	10
4/04/2020	451	7
4/05/2020	461	10
4/06/2020	477	16
4/07/2020	496	19
4/08/2020	520	24
4/09/2020	548	28
4/10/2020	571	23
4/11/2020	585	14
4/12/2020	586	1



**Data Table for Figure 3**

Week of symptom onset	Number of outbreaks in Ottawa retirement homes	Number of outbreaks in long-term care/ nursing homes in Ottawa	Number of outbreaks in Ottawa hospitals	Number of outbreaks in other Ottawa institutions
Mar 01	0	0	0	0
Mar 08	0	0	0	0
Mar 15	2	0	1	0
Mar 22	1	1	1	1
Mar 29	1	1	2	0
Apr 05	0	4	0	0
Apr 12				
Apr 19				
Apr 26				
May 03				
May 10				
May 17				
May 24				
May 31				
Jun 07				
Jun 14				
Jun 21				
Jun 28				
Jul 05				
Jul 12				
Jul 19				
Jul 26				
Aug 02				
Aug 09				
Aug 16				
Aug 23				

