



# COVID-19 Epidemiology Update

OTTAWA PUBLIC HEALTH. Report compiled on April 16, 2020, 11:00 am

## Contents

Purpose .....	0
Summary .....	0
Cases Over Time.....	1
Case Characteristics.....	2
Severity of Cases.....	2
Exposure Settings.....	3
Outbreaks .....	4
Data Notes & Sources .....	4
Data Tables .....	5

## Purpose

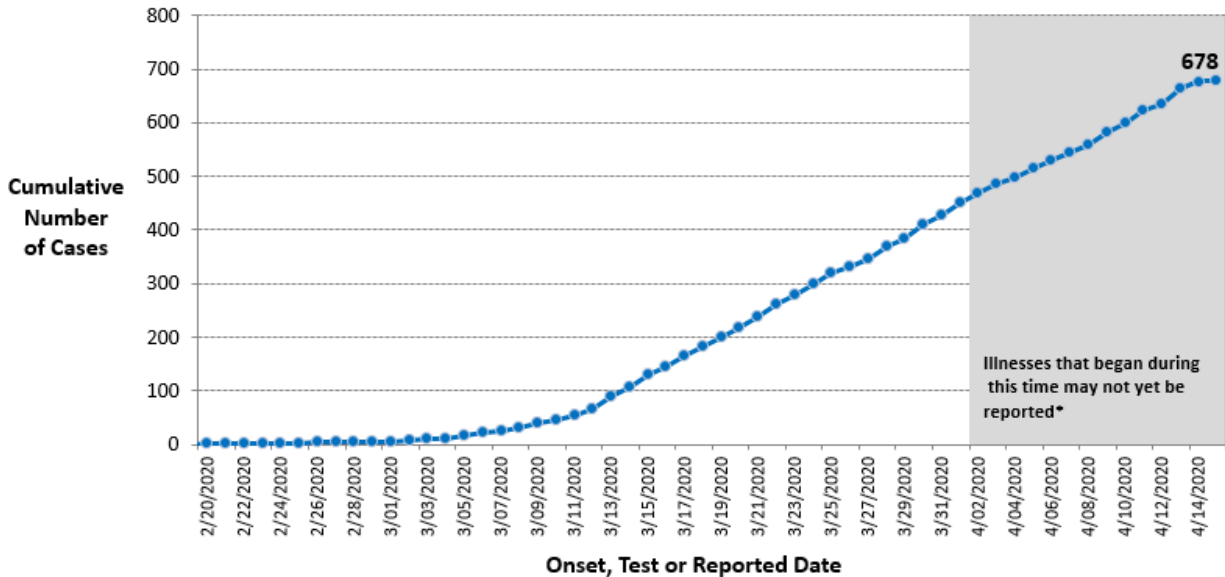
This daily report provides an epidemiologic summary of COVID-19 activity in Ottawa to date. The report includes the most current information available from the integrated Public Health Information System (iPHIS) and a chart review of COVID-19 cases as of 4:00 p.m. April 15, 2020.

## Summary

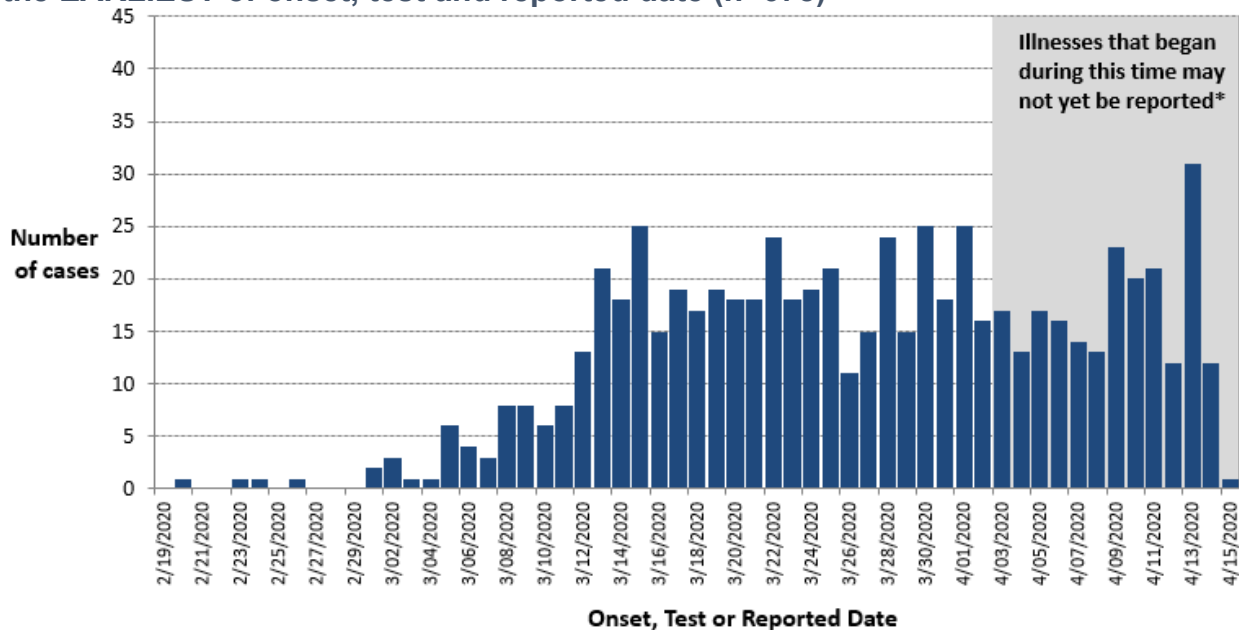
- 678 laboratory-confirmed cases, including 14 deaths, have been reported in Ottawa.
- This includes 35 new cases and 1 new death since the previous report.
- 14% of cases have been hospitalized (cumulative), including 5% in intensive care (cumulative).
- The median age of cases is 48 years (range, 1 to 102 years).
- There are 15 ongoing outbreaks in [institutions](#).
- The most common reported exposure settings for cases include: 37% with close contact with a case only, 25% with no travel and no known contact with a case, 18% with travel only, and 14% with exposure information pending.

## Cases Over Time

**Figure 1. Cumulative epidemiological curve of Ottawa residents with confirmed COVID-19, by the EARLIEST of onset date, test and reported date**



**Figure 2. Epidemiological curve of Ottawa residents with confirmed COVID-19, by the EARLIEST of onset, test and reported date (n=678)**



**Notes for Figure 1 and 2:**

1. Data are from iPHIS and a chart review of individuals with COVID-19 -positive laboratory results as of 4:00 p.m. on April 15, 2020.
2. The onset date is the earliest of symptom onset, laboratory testing, and reporting dates. This means that in the graphs, cases are shown based on when the person's symptoms started, or if that is not known, the date that they were tested. If the test date is not known, the date that the case was reported to public health is used. As the case is investigated and more information is available, the dates in the graph are updated.
3. Confirmed cases are those with a confirmed COVID-19 laboratory result as per the Ministry of Health Public health management of cases and contacts of COVID-19 in Ontario. March 25, 2020 version 6.0.
4. A patient's exposure may have occurred up to 14 days prior to onset of symptoms.
5. \*Symptomatic cases occurring in approximately the last 14 days are likely under-reported due to the time for individuals to seek medical assessment, availability of testing, and receipt of test results.



## Case Characteristics

**Table 1. Summary of confirmed Ottawa cases**

Measure	Number	Percentage
Case count	678	-
Change from previous report	35	5% increase
Age, median (range)	48 years (1-102)	-
Age		
<5 years	5	1%
5 to 19 years	16	2%
20 to 44 years	259	38%
45 to 64 years	240	35%
65 years and older	158	23%
Unknown	0	0%
Gender		
Female	371	55%
Male	307	45%
Unknown	0	0%
Health care workers and first responders <sup>3</sup>	96	14%

Notes:

1. Data are from iPHIS and a chart review of individuals with COVID-19 -positive laboratory results as of 4:00 p.m. on April 15, 2020.
2. Confirmed cases are those with a confirmed COVID-19 laboratory result as per the Ministry of Health Public health management of cases and contacts of COVID-19 in Ontario. March 25, 2020 version 6.0.
3. Previous reports (April 5 to 10) misclassified some cases as health care workers. This error has been corrected as of April 11, 2020.

## Severity of Cases

**Table 2. Severity of confirmed Ottawa cases**

Measure	Number	Percentage
<b>All cases</b>	<b>678</b>	
Cumulative hospitalized	97	14%
Currently in hospital	43	6%
Cumulative intensive care	32	5%
Currently in intensive care	17	3%
Deaths	14	2%
Resolved <sup>4</sup>	275	41%

Notes:

1. Data are taken from chart review of individuals with CoV-positive laboratory results, consulted at 4:00 p.m. on April 15, 2020.
2. Confirmed cases are those with a confirmed COVID-19 laboratory result as per the Ministry of Health Public health management of cases and contacts of COVID-19 in Ontario. March 25, 2020 version 6.0.
3. Intensive care patients are a subset of hospitalized patients.
4. Resolved cases are persons whose symptoms have resolved and who have been discharged from isolation as per the Ministry of Health Public Health Guidance on Testing and Clearing Cases. March 26, 2020. version 2.0.



**Table 3. Age among cumulative hospitalized and intensive care confirmed Ottawa COVID-19 cases (n=678)**

Measure	Cumulative Hospitalized		Cumulative intensive care	
	Number	Percentage	Number	Percentage
Case count	97	14%	32	5%
Age, median (range)	65 years (29 to 97)		64 years (32 to 83)	
Age				
<5 years	0	0%	0	0%
5 to 19 years	0	0%	0	0%
20 to 44 years	13	13%	5	16%
45 to 64 years	35	36%	11	34%
65 years and older	49	50%	16	50%

Notes:

1. Data are taken from chart review of individuals with CoV-positive laboratory results, consulted at 4:00 p.m. on April 15, 2020.
2. Intensive care patients are a subset of hospitalized patients.
3. Confirmed cases are those with a confirmed COVID-19 laboratory result as per the Ministry of Health Public health management of cases and contacts of COVID-19 in Ontario. March 25, 2020 version 6.0.

### Exposure Settings

**Table 4. Exposures of confirmed Ottawa COVID-19 cases**

Exposure	Number	Percentage
Travel only	119	18%
Travel and contact with a case	44	6%
Contact with a case only	252	37%
No travel and no known contact with a known case	167	25%
Undetermined/pending	96	14%
<b>TOTAL</b>	<b>678</b>	

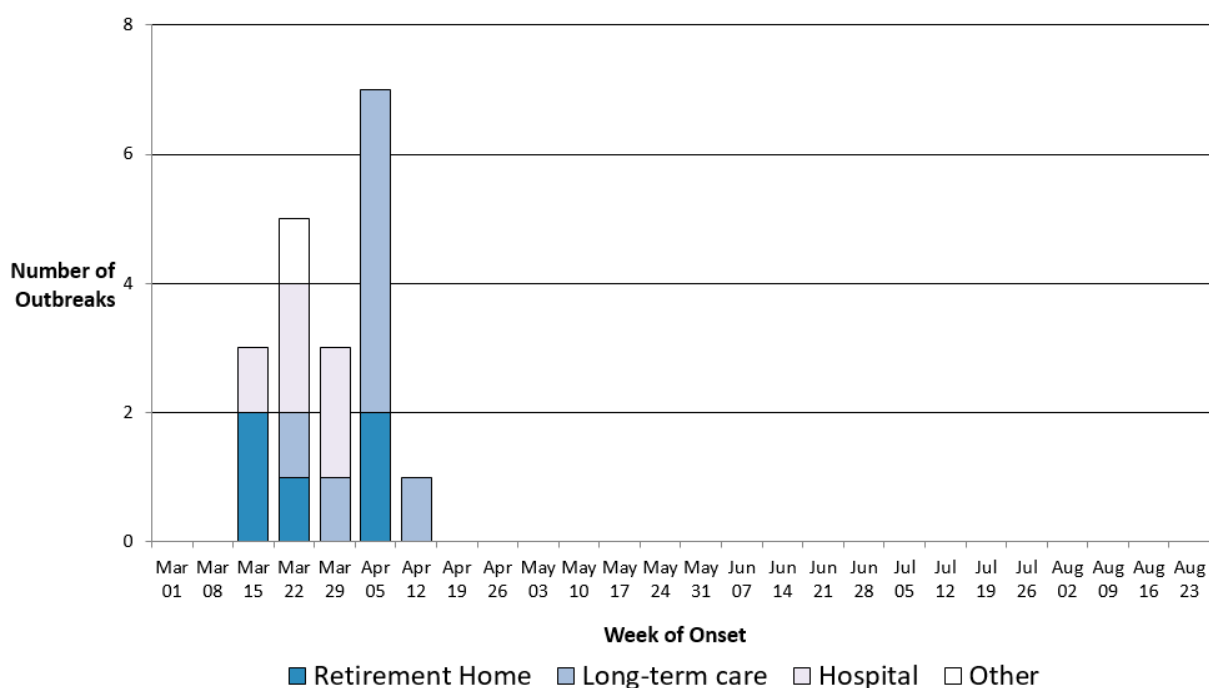
Notes:

1. Data as of 4:00 p.m. on April 15, 2020. Investigations are ongoing.
2. Confirmed cases are those with a confirmed COVID-19 laboratory result as per the Ministry of Health Public health management of cases and contacts of COVID-19 in Ontario. March 25, 2020 version 6.0.



## Outbreaks

**Figure 3. Total number of COVID-19 outbreaks in Ottawa institutions<sup>2</sup>**



1. Data as of 4:00 pm on April 15, 2020. Four outbreaks are closed and 15 are active. Investigation and data entry are ongoing.
2. Institutions include long-term care homes, retirement homes, group homes (other) and public hospitals.

## Data Notes & Sources

Data extracted represent a snapshot at the time of extraction and may differ in previous or subsequent reports. These data sources are used:

- 1) Case information
  - a. Ontario Ministry of Health, integrated Public Health Information System (iPHIS), extracted by Ottawa Public Health at 4:00 p.m. each day. iPHIS is a dynamic disease reporting system that allows for ongoing updates to data previously entered. Data extracted from the iPHIS database represent a snapshot at the time of extraction and can be different in previous or subsequent reports.
  - b. OPH Public Health Medical Unit case management chart review

**Please use the following citation when referencing this document:**

Ottawa Public Health. COVID-19 Epidemiology Update. April 16, 2020. Ottawa (ON): Ottawa Public Health; 2020.

**For further information about COVID-19 in Ottawa,** visit [ottawapublichealth.ca](https://ottawapublichealth.ca).



## Data Tables

### Data Table for Figures 1 and 2

<b>Earliest of Onset, Test or Reported Date</b>	Figure 1. Cumulative epidemiological curve of Ottawa residents with confirmed COVID-19	Figure 2. Epidemiological curve of Ottawa residents with confirmed COVID-19
	Total Confirmed COVID-19 Cases	Confirmed COVID-19 Cases by Date
2/19/2020	0	0
2/20/2020	1	1
2/21/2020	1	0
2/22/2020	1	0
2/23/2020	2	1
2/24/2020	3	1
2/25/2020	3	0
2/26/2020	4	1
2/27/2020	4	0
2/28/2020	4	0
2/29/2020	4	0
3/01/2020	6	2
3/02/2020	9	3
3/03/2020	10	1
3/04/2020	11	1
3/05/2020	17	6
3/06/2020	21	4
3/07/2020	24	3
3/08/2020	32	8
3/09/2020	40	8
3/10/2020	46	6
3/11/2020	54	8
3/12/2020	67	13
3/13/2020	88	21
3/14/2020	106	18
3/15/2020	131	25
3/16/2020	146	15
3/17/2020	165	19



3/18/2020	182	17
3/19/2020	201	19
3/20/2020	219	18
3/21/2020	237	18
3/22/2020	261	24
3/23/2020	279	18
3/24/2020	298	19
3/25/2020	319	21
3/26/2020	330	11
3/27/2020	345	15
3/28/2020	369	24
3/29/2020	384	15
3/30/2020	409	25
3/31/2020	427	18
4/01/2020	452	25
4/02/2020	468	16
4/03/2020	485	17
4/04/2020	498	13
4/05/2020	515	17
4/06/2020	531	16
4/07/2020	545	14
4/08/2020	558	13
4/09/2020	581	23
4/10/2020	601	20
4/11/2020	622	21
4/12/2020	634	12
4/13/2020	665	31
4/14/2020	677	12
4/15/2020	678	1



**Data Table for Figure 3**

Week of symptom onset	Number of outbreaks in Ottawa retirement homes	Number of outbreaks in long-term care/ nursing homes in Ottawa	Number of outbreaks in Ottawa hospitals	Number of outbreaks in other Ottawa institutions
Mar 01	0	0	0	0
Mar 08	0	0	0	0
Mar 15	2	0	1	0
Mar 22	1	1	2	1
Mar 29	0	1	2	0
Apr 05	2	5	0	0
Apr 12	0	1	0	0
Apr 19				
Apr 26				
May 03				
May 10				
May 17				
May 24				
May 31				
Jun 07				
Jun 14				
Jun 21				
Jun 28				
Jul 05				
Jul 12				
Jul 19				
Jul 26				
Aug 02				
Aug 09				
Aug 16				
Aug 23				

